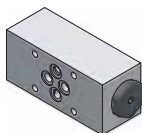
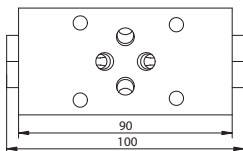
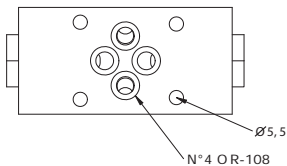
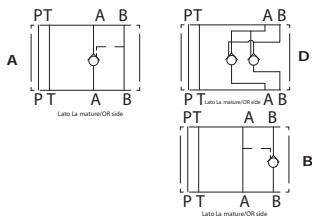


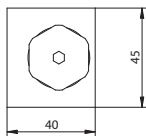
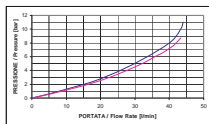
MODULAR PILOT OPERATED CHECK VALVE CETOP 3



Hydraulic diagram



OIL 36cSt a 50°C



MVS 06-CP-D-35-10

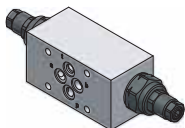
S=STEEL
A=ALUMINIUM

D=DOUBLE
A=PORT A
B=PORT B

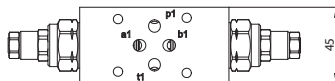
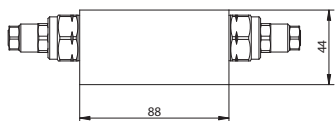
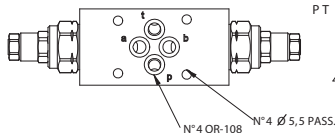
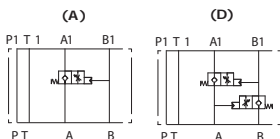
SERIES

35=1: 3.5 PILOT RATIO
95=1: 9.5 PILOT RATIO

MODULAR PILOT OPERATED CHECK VALVE CETOP3 WITH FLOW REGULATOR

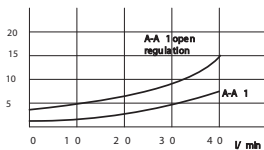


Hydraulic diagram



Δ P bar

Oil 36cSt @ 50°C



MVS 06-FC-D-35-10

S=STEEL
A=ALUMINIUM

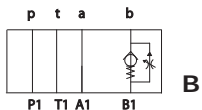
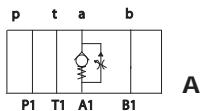
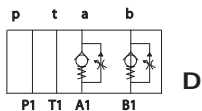
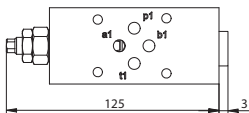
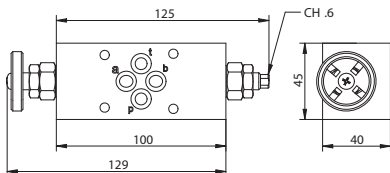
SERIES

D=DOUBLE
A=PORT A
B=PORT B

35=1:3.5 PILOT RATIO

MODULAR ONE WAY FLOW CONTROL VALVE CETOP 3

Hydraulic diagram


MVS 06-FR-D-H-10

 S=STEEL
A=ALUMINIUM

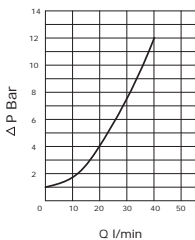
SERIES

 D=DOUBLE
A=PORT A
B=PORT B

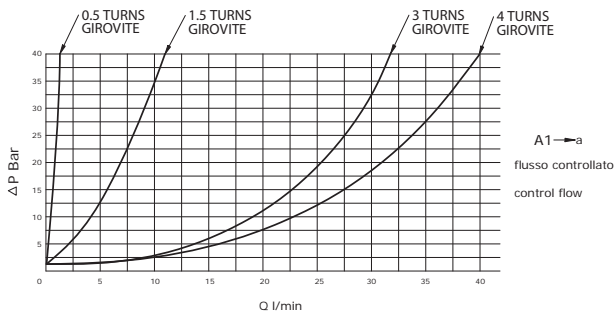
 H=HEAD SCREW
K=KNOB see page V01

MODULAR ONE WAY FLOW CONTROL VALVE CETOP 3

PRESSURE DROP FREE FLOW

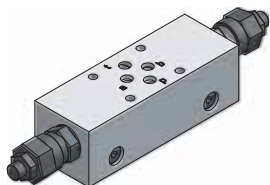


a → A1

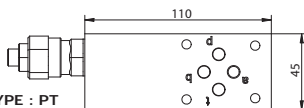


A1 → a
flusso controllato
control flow

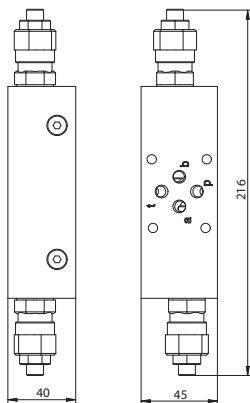
CETOP 3 MODULAR RELIEF VALVE



TYPE : PT

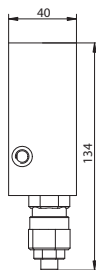
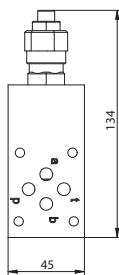


TYPE : D DT

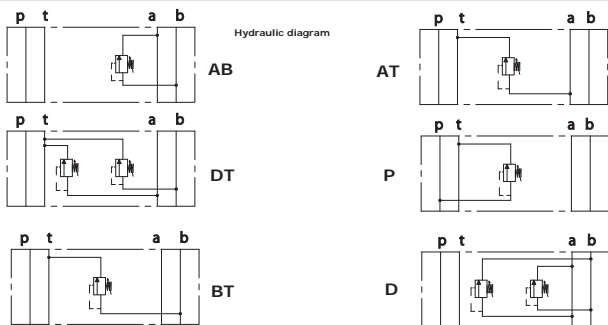


TYPE : AT

TYPE : BA BT

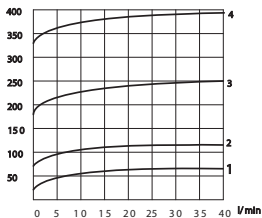


CETOP 3 MODULAR RELIEF VALVE



P bar

PRESSURE DROP CURVES



MVS 06-RV-DT-3-H-10

S=STEEL
A=ALUMINIUM

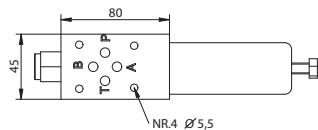
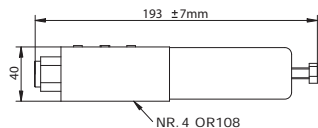
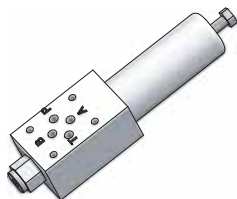
D=A vs. B ; B vs. A
DT=A vs. T ; B vs. T
P=P vs. T
AT=A vs. T
BT=B vs. T
BA=B vs. A

SERIES

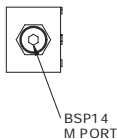
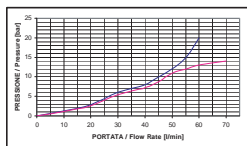
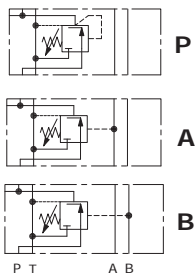
H=HEAD SCREW
K=KNOB see page V01

1=5-50 BAR
2=30-100 BAR
3=50-250 BAR
4=100-350 BAR

MODULAR PRESSURE REDUCING VALVE CETOP 3



Hydraulic Diagram

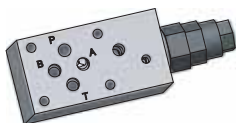
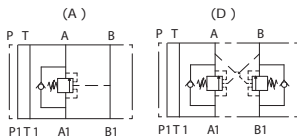
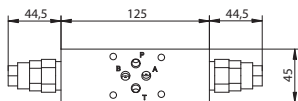
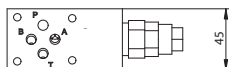
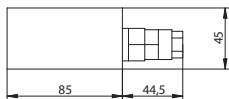
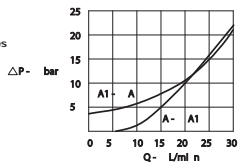


MVS 06-PR-P-035-10

P=PORT P
A=PORT A
B=PORT B

SERIES

035= 5 - 35 BAR
070= 5 - 70 BAR
140= 30 - 140 BAR
280= 60 - 280 BAR

MODULAR OVERCENTER VALVE CETOP 3

Hydraulic diagram

SCHEMA "A"
SCHEMA "D"

Pressure drop curves

MVS 06-OV-D-N-1-2-10

 S=STEEL
A=ALUMINIUM

 D=DOUBLE
A=PORT A

 N=NORMAL
B=BALANCED

SERIES

2=60 - 220 BAR

3=100 - 350 BAR

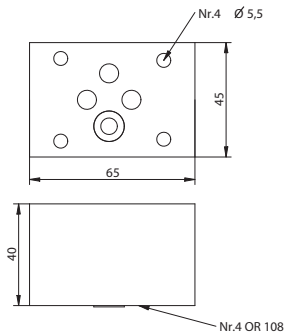
1=4:1 PILOT RATIO

2=8:1 PILOT RATIO

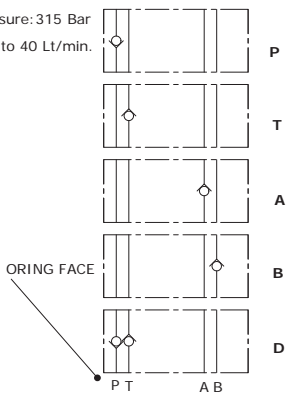
MODULAR DIRECT CHECK VALVE CETOP 3



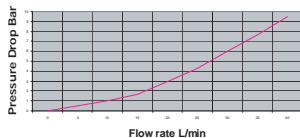
Operating pressure: 315 Bar
Flow Rate: Up to 40 Lt/min.



Hydraulic symbol



Performances OIL 36cSt 50°



MVS 06-CD-D-35-10

D=DOUBLE P-T
A=PORT A
B=PORT B
P=PORT P
T=PORT T

SERIES

05=0.5 BAR Cracking Pressure
30=3.0 BAR Cracking Pressure
50=5.0 BAR Cracking Pressure

