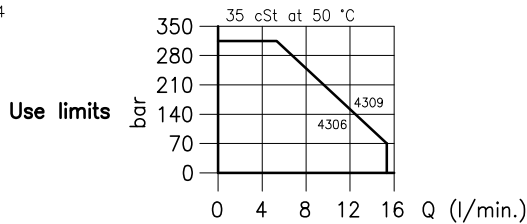
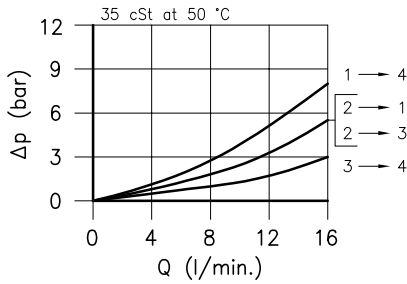
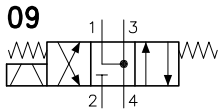
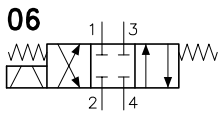
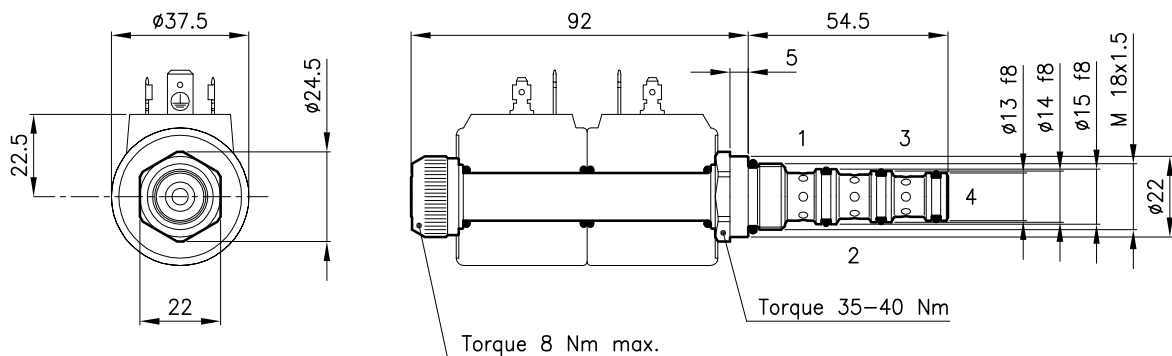


**Technical features**



Cavity	(For dimensions see catalogue 17.000)	S 20/4
Max. flow	(l/min.)	15
Max. pressure way 1-2-3	(bar)	315
Max. pressure way 4	(bar)	50
Max. leakage	(cm <sup>3</sup> /min.)	20
Response time	(ms)	20 - 40
It change in function of circuit, pressure, flow and fluid viscosity.		(Mean value)
Fluid viscosity range	(cSt)	2.8 - 380
Fluid temperature range	(°C)	-20 +80
Mass	(kg)	0.170
Hydraulic fluid; mineral oil HM and HV ISO 6074		
Recommended filtration; 19/15 ISO 4466 (25 μ absolutes)		
Standard seals in Polyurethane and Buna N		

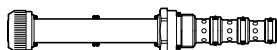
**Dimensions**



**Ordering informations**

**ETD 20/4306**

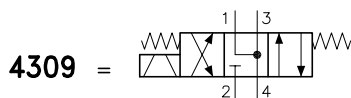
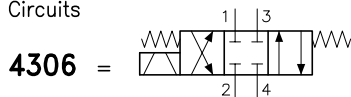
ETD 20/43.. = Valve type  
Centre closed



Codes:

ETD 20/4306	25 011 125
ETD 20/4309	25 011 126
External seals kit	90 620 102

Circuits



ETD 20/43.. valves can be assembled on standard bodies 20-C4 series; for dimensions see catalogue 16.011

On the ETD 20 valves must be assembled the Coils B20 series; for dimensions, features and codes see catalogues 09.900 and 09.901.