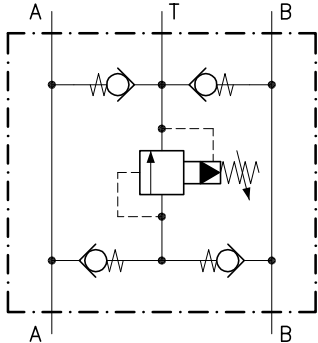
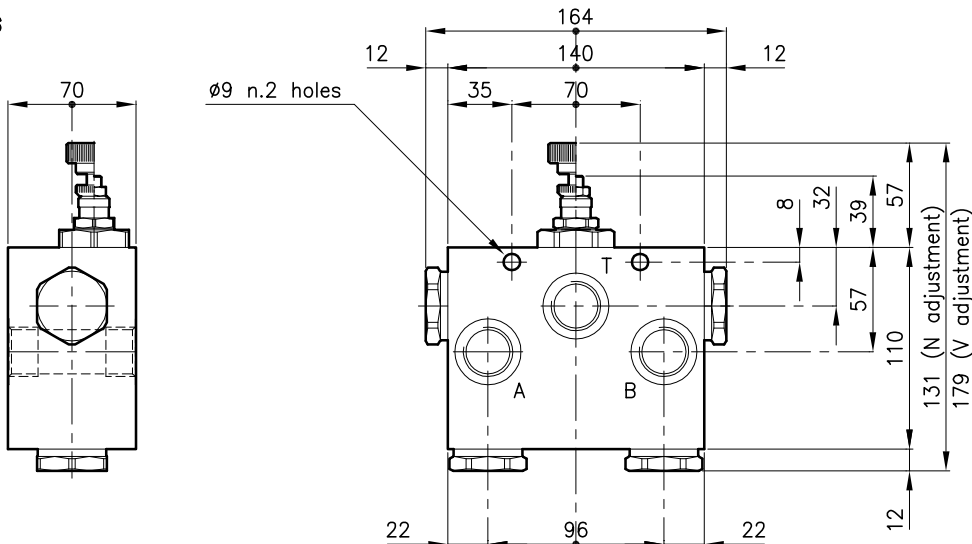


Technical features



Valves	(For features see catalogue 02.130)	LPI 50
	(For features see catalogue 05.070)	CAE 50/P
Max. flow	(l/min.)	160
Max. pressure	(bar)	420
Fluid viscosity range	(cSt)	2.8 - 380
Fluid temperature range	(°C)	-20 +80
Mass	(kg)	4.250
Cracking pressure 95% of setting value		
Cracking pressure defined with 1 l/min.		
Standard setting obtained with 10 l/min.		
Hydraulic fluid; mineral oil HM and HV ISO 6074		
Recommended filtration; 19/15 ISO 4466 (25 μ absolutes)		
Standard seals in Polyurethane and Buna N		

Dimensions



Ordering informations

LPI 50/D-N-CSL 06-B12

Valve type _____

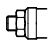
Standard springs

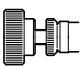
Type Setting value

D = 14 - 210 bar _____

Q = 105 - 420 bar _____

Adjustment type

N = Standard adjustment 

V = Handknob adjustment 

Version _____

Standard ports

B12 = G 3/4 ISO 228 _____

Codes:

LPI 50/D-N-CSL 06-B12	51 011 148
LPI 50/Q-N-CSL 06-B12	51 011 149
LPI 50/D-V-CSL 06-B12	51 011 150
LPI 50/Q-V-CSL 06-B12	51 011 151

Only body code:

Body type 50-CSL 06-B12	58 144 116
-------------------------	------------