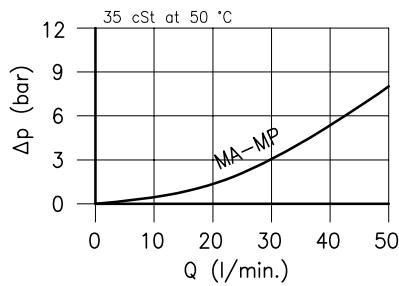
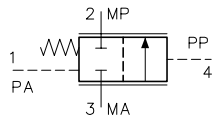
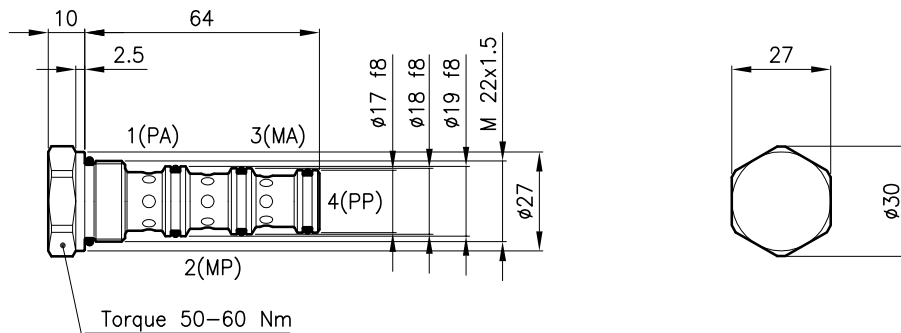


Technical features



Cavity (For dimensions see catalogue 17.000)	S 30/4
Nominal flow (l/min.)	40
Max. pressure (bar)	350
Min pressure difference (bar)	0.2 – 0.35
Ratio between areas PA / PP	1:1
Fluid viscosity range (cSt)	2.8 – 380
Fluid temperature range (°C)	-20 +80
Mass (kg)	0.150
Hydraulic fluid; mineral oil HM and HV	ISO 6074
Recommended filtration; 19/15 ISO 4466 (25 μ absolutes)	
Standard seals in Polyurethane and Buna N	

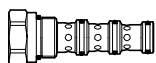
Dimensions



Ordering informations

MTV 30/P

MTV 30 = Valve type



Standard spring

P = 0.2–0.35 bar

Codes:

MTV 30/P 33 011 202

External seals kit 90 620 105

MTV 30 valves can be assembled on standard bodies 30–C4 series; for dimensions see catalogue 16.011